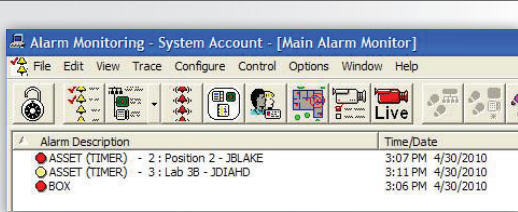




Key Systems, Inc.'s GFMS Integrator is a secure platform for two way data sharing between GFMS™ and your existing facility management software. This new release is a software only update available to new and existing GFMS™ customers alike.

Our new platform removes the need to manage GFMS™ as a secondary software interface. GFMS Integrator provides access to GFMS alarms, user and group information, key transactions, and more. You are also able to add and edit data within GFMS through GFMS Integrator. This would include adding users to GFMS and changing user data (like updating a Badge ID). Avoid updates to redundant user data and eliminate physical relays to your facilities monitoring systems.



GFMS OnGuard® Driver Features:

GFMS alarms appear in OnGuard® Alarm Monitor

- Alarms will be sorted by device (SAM)
- Alarms can be acknowledged in OnGuard®
- Alarms will display Type, Associated User/Key, and the Date and Time the alarm occurred

OnGuard® user modifications update to GFMS in real-time

- Use OnGuard® to update user ID information and scheduling to GFMS
- User add/deletes are synced directly to GFMS

Requirements & Specifications

Key Systems, Inc. combines the integration capabilities of the OnGuard® DataConduit™ service available to Lenel customers with our own integration module, GFMS Integrator. This provides a rich, stable environment for data sharing between the two software systems.

GFMS Requirements:

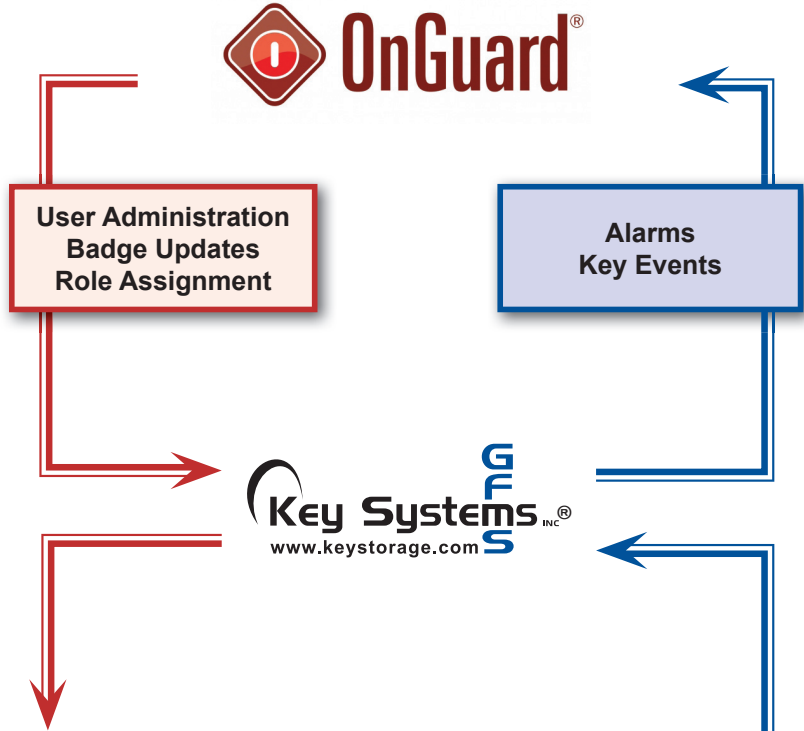
- GFMS v1.5

Lenel Requirements:

- OnGuard® version 6.3.249 or 6.4.500 with DataConduit™



The GFMS Integrator OnGuard® Driver is built on top of the functionality provided by the GFMS Integrator. It interfaces with the Lenel OnGuard® DataConduit™ platform, sharing data between both and OnGuard® through configurable features set by the customer.



OnGuard® is a registered trademark of Lenel.

Key Systems INC
 PO Box G • Fishers • NY • 14453
 Phone 800 • 888 • 3553
 www.keysystemsinc.com